

THE ART OF SPIRIDON DECO



version 2.0

DESIGNED BY SPIRIDON DECO
AND INSPIRED BY CUSTOMERS
FROM 2000 TO 2024

WWW.SPIDONDECO.COM

Spiridon Deco

CREATOR OF LIGHT



Who are we?

The family SPIRIDON believes that all projects and ideas could be materialized.

We are convinced that originality and quality are not exclusive and that these are two key elements when designing your interiors. That is why we offer a wide range of lightings and the possibility to produce your own personalized chandeliers.

In addition to the collection displayed, any of our model can be modified upon your request. Helped by young designers, our team supports you for any tailor-made product and will guide you through all the step of the creation. Moreover, we offer to the architects and to our professional partner all the help they are needing to make their project a success.

Constantly looking for a perfect consumer experience, we engage ourselves to require from our workshop a dedicated work. Thanks to an exigent selection of our raw materials, the quality of the artisanal manufacture of our products is guaranteed. Our close relationship with our partners allows us to answer quickly to any of your specific needs.



Model : **POMPADOUR** (H. 159cm)
Floor lamp from MARQUISE family.
*Overlays of modules composed by braids
of glass beads and pearls.*





S.

Model : **TUMULUS** (Ø.100cm)
Suspension from COROLLE family.
*Domed and circular metal structure entirely
covered with glass sheets.*



Model : **BIJOU** (Ø.30~90cm)
Suspensions from **FLAMBEAU** family.
*Glass crystals fixed on a spheric metal
structure, covered by glass beads.*





Model : **ROUNDMOND** (Ø.70cm)
Suspension from **FACETTE** family.
Glass crystals fixed on a circular metal structure, covered by glass beads.



Model : **PALMOND** (L.160cm)
Suspension from **FACETTE** family.
Glass crystals fixed on an oval metal structure, covered by glass beads.



Model : **PARACHUTE** (H.160~235cm)
Suspensions from **FLAMBEAU** family.

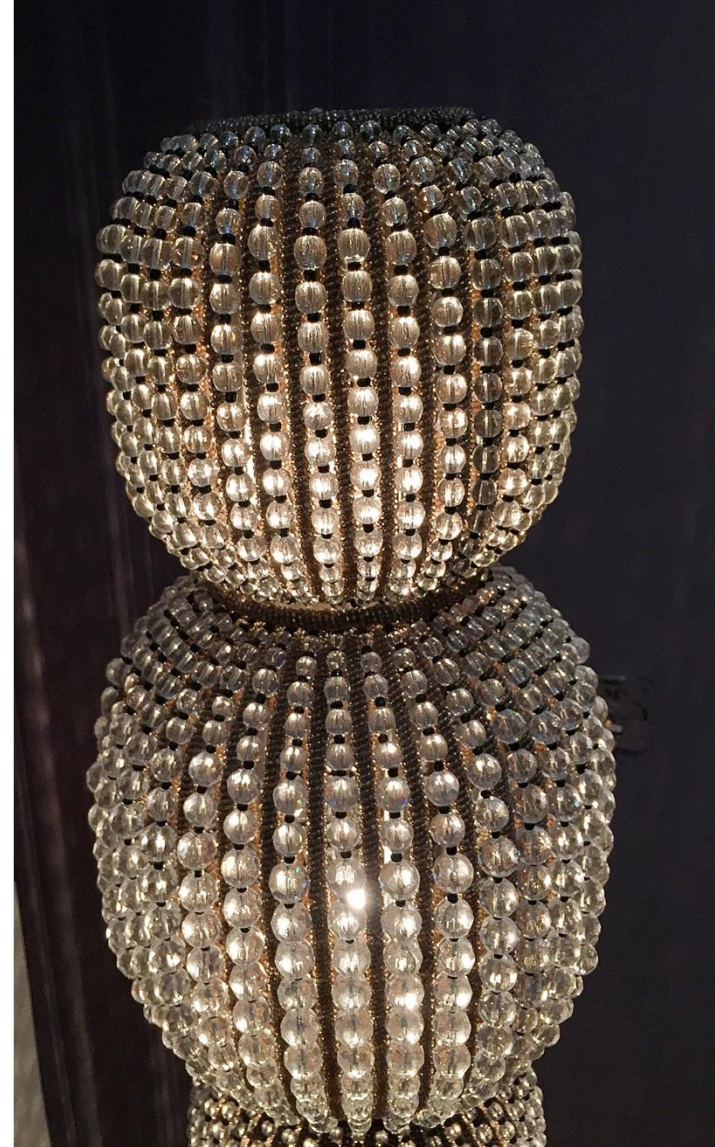
Glass crystals and copper pieces fixed on a structure and covered with glass beads.



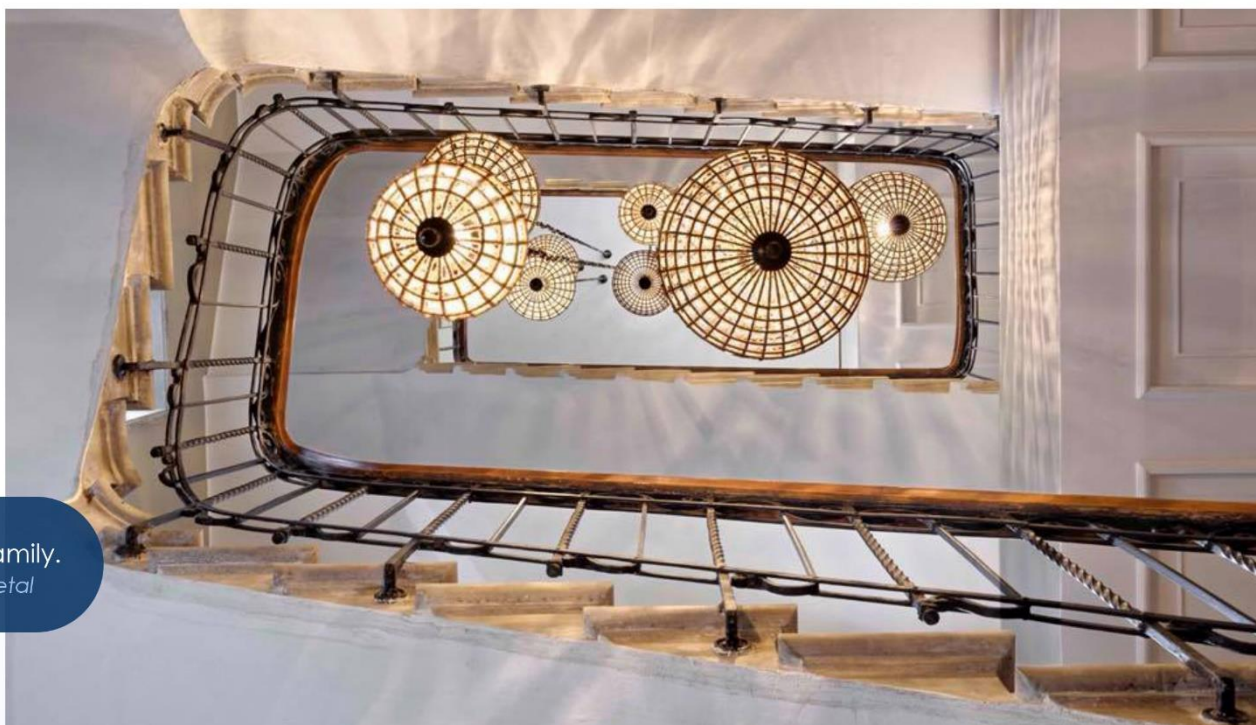
Sébastien Joly
Photographe Professionnel







Model : **POMPADOUR** (H.176cm)
Floor lamp from MARQUISE family.
*Superposition of pearl and glass bead
modules fixed on a circular metal plate.*



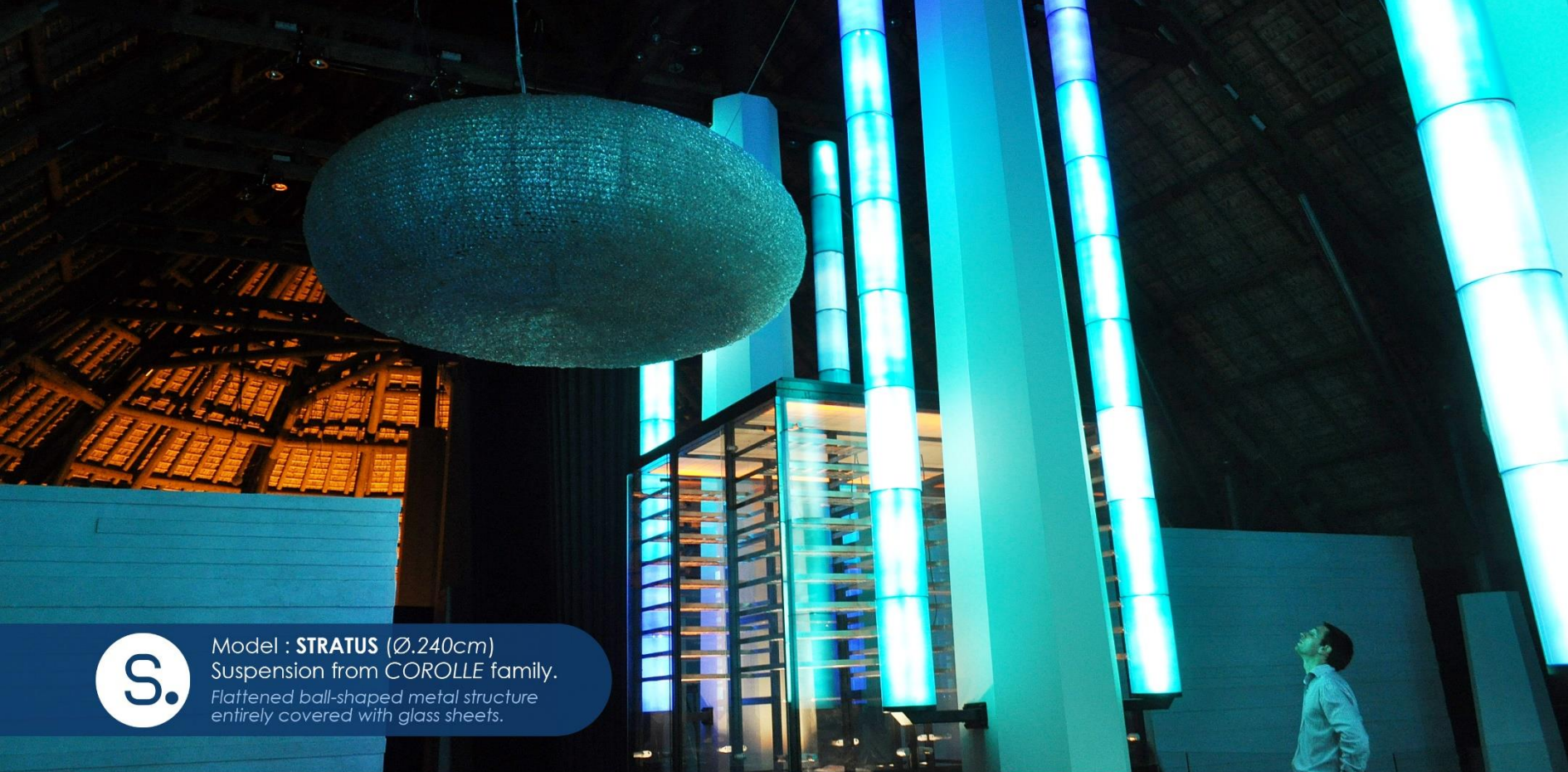
Model : **CANON** (Ø.20~50cm)
Suspensions from **FLAMBEAU** family.
Glass crystals fixed on a spherical metal structure, with cap and copper tip.





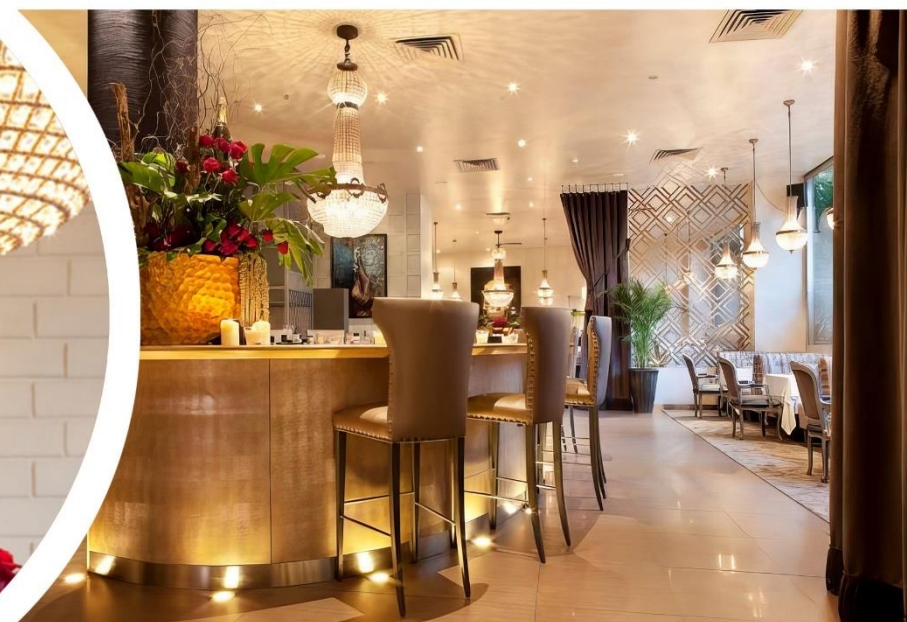
S.

Model : **ROUNDMOND** (Ø.100cm)
Suspension from **BALUR** family.
*Glass crystals fixed on an circular metal
structure, covered by glass beads.*



Model : **STRATUS** (Ø.240cm)
Suspension from COROLLE family.
*Flattened ball-shaped metal structure
entirely covered with glass sheets.*





Model : **PARACHUTE** (H.72~160cm)
 Suspensions from **FLAMBEAU** family.
*Glass crystals and copper pieces fixed on a
 structure ad covered with glass beads.*



Model : **ARMURE** (D.30~90cm)
Suspension from **FLAMBEAU** family.
Glass crystals fixed on mid-round structure
entirely covered by glass beads.



Model : **MURABA** (25x25x15cm)
Floor lamp from BALUR family.

*Glass crystals fixed in row on a square
structure in nickel-plated metal.*



Model : **MAINTENON** (Ø.20~25cm)
Suspensions from **MARQUISE** family.
Module composed by braids of glass beads and pearls.



Model : **BIELA** (Ø.21~27cm)
Suspensions from **ATOME** family.
A multitude of glass balls fixed to a slightly flattened ball structure and covered with a metal cap.



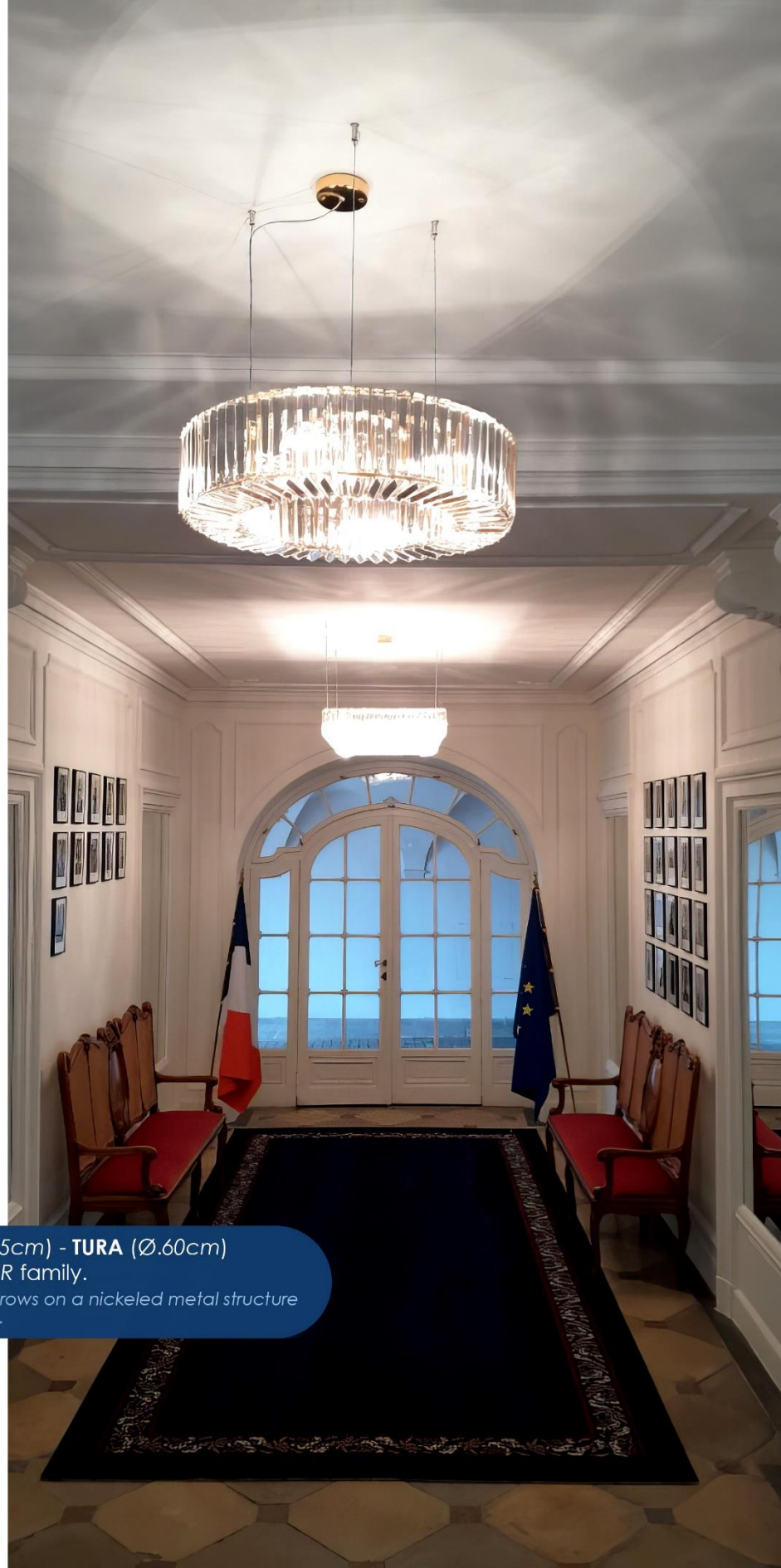
Model : **BIELA** (Ø.60cm)
Suspensions from ATOME family.
*A multitude of glass balls fixed to a
ounded metal structure.*



Model : **STALLAC** (H.100~200cm)
Suspension from **MARQUISE** family.
Faceted glass balls in rows on a structure
fully covered by glass beads.



Model : **CUSTOM**
Suspensions from BALUR family.
*Ceiling light with long glass crystals
suspended.*



Models : **TAFA** (L.135x65cm) - **TURA** (Ø.60cm)
Suspensions from **BALUR** family.

*Long glass crystals, fixed in rows on a nickered metal structure
available in several finishes.*



S.

Model : **POMPADOUR** (H.60~202cm)
Suspensions from **MARQUISE** family.
Faceted glass balls in rows, separated by lines of glass beads and fixed on a nickel-plated metal structure.





S.

Model : **CASCADE** (Ø.35~100cm)
Suspension from MUYE family.
Suspension composed of long lines of glass
beads ending in a glass drop.

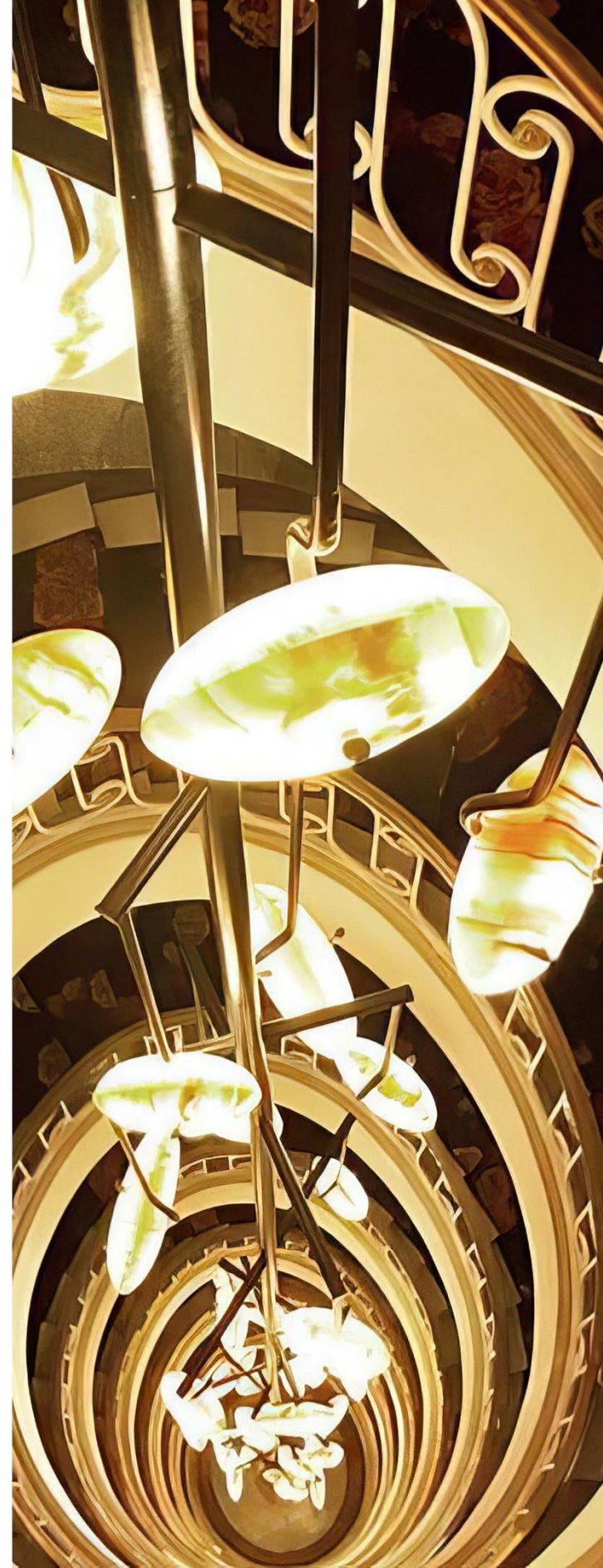
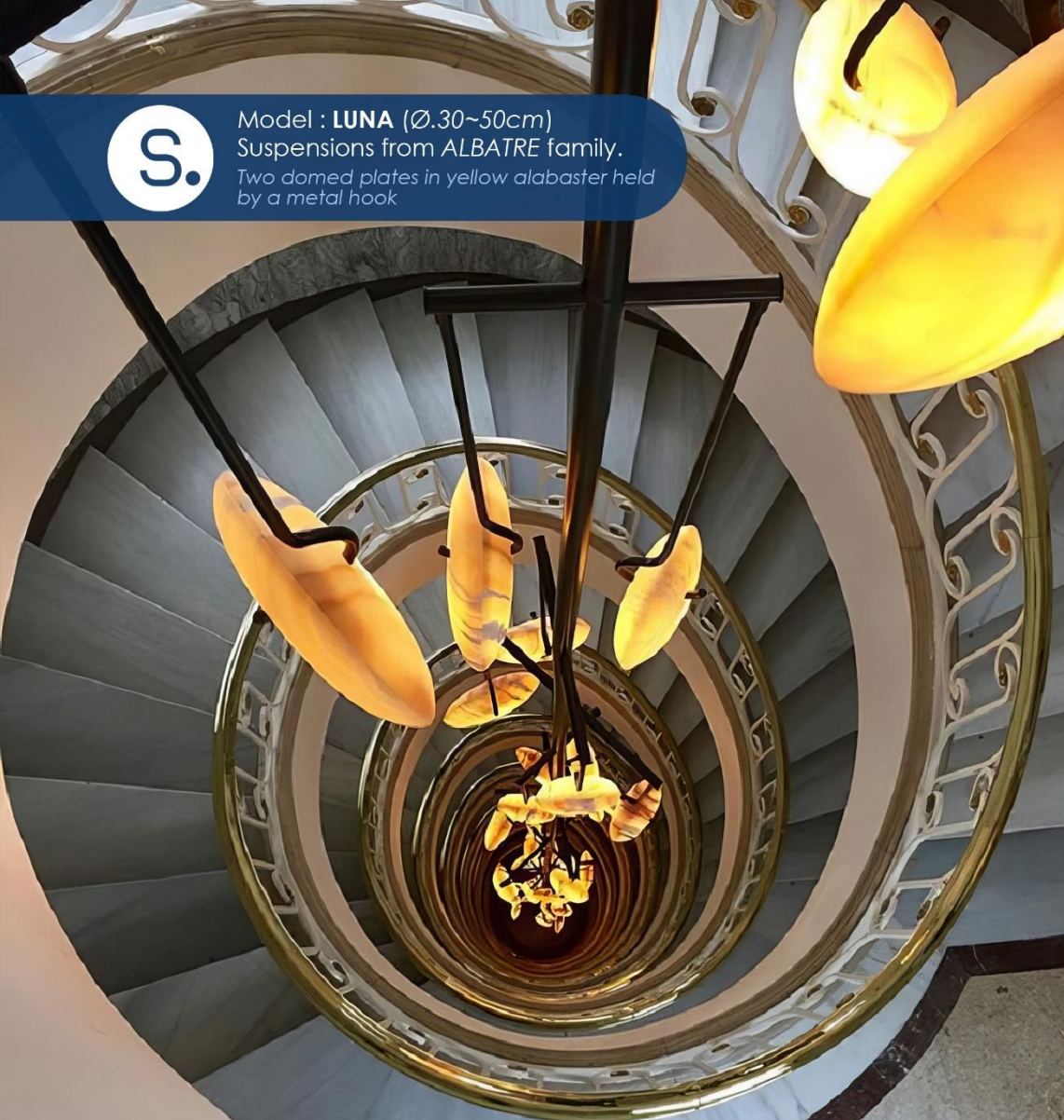


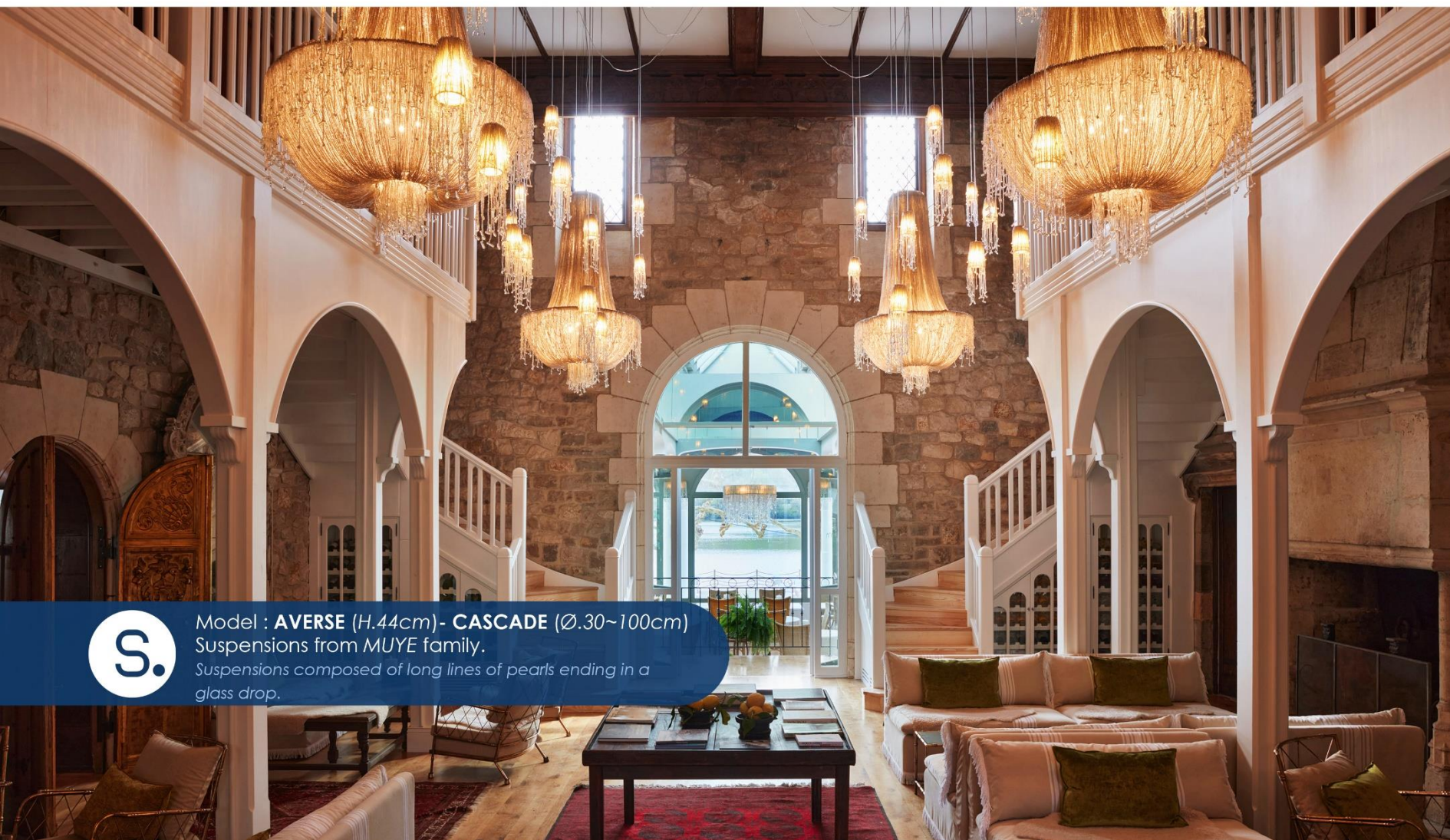


Model : **GLYCINE** (H.26cm)
Table lamp from **PETALE** family.
Bouquet of mat glass petals presented in a metal pot.



Model : **LUNA** (Ø.30~50cm)
Suspensions from ALBATRE family.
*Two domed plates in yellow alabaster held
by a metal hook*

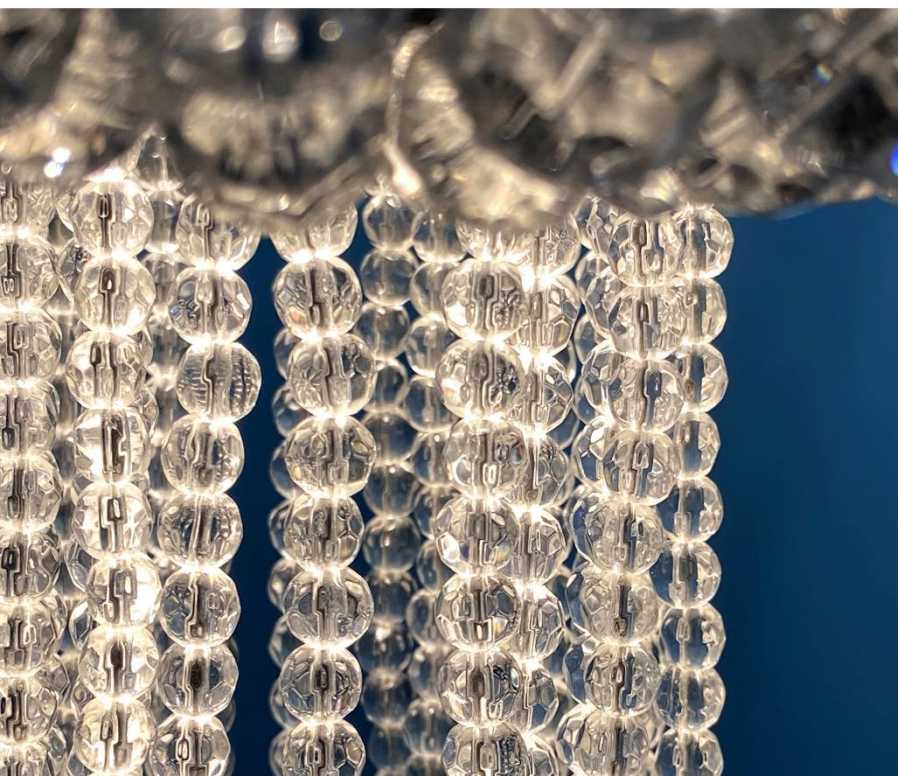
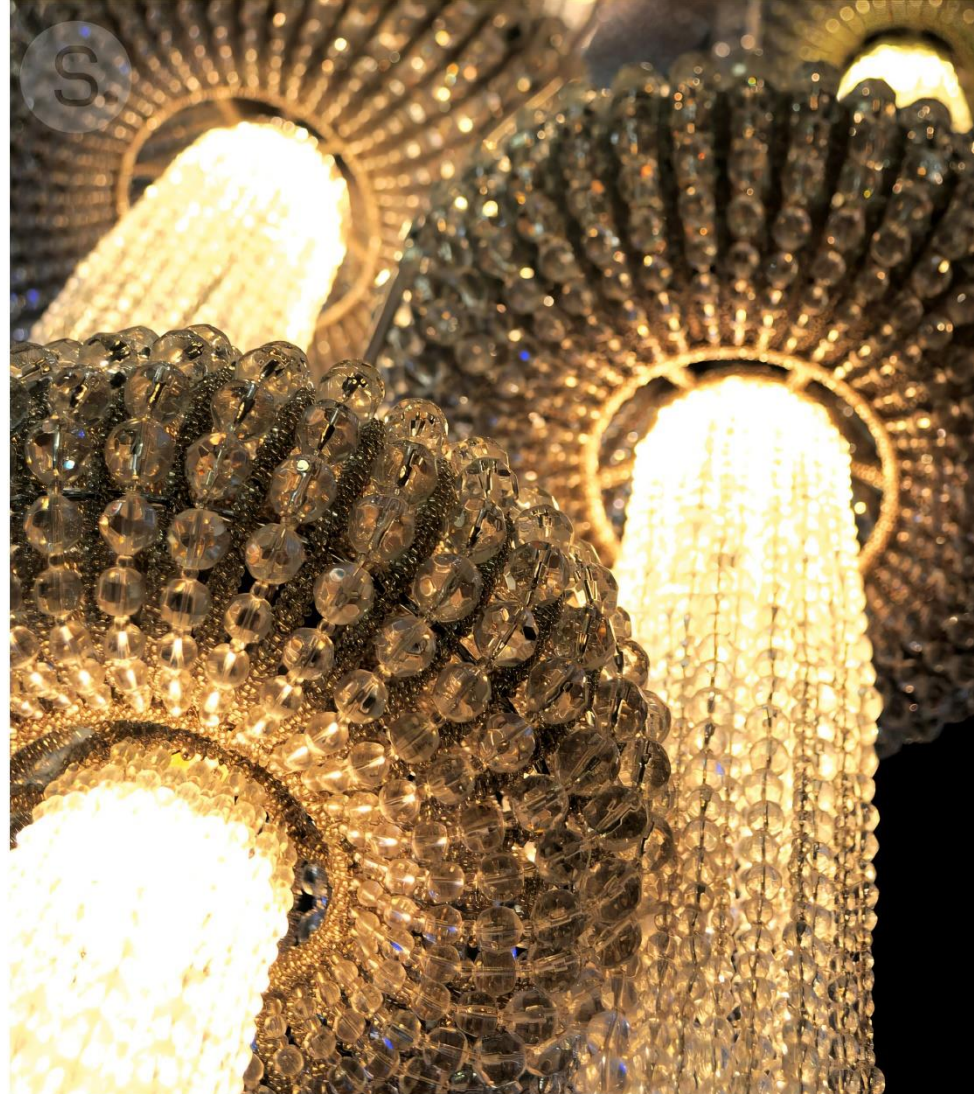


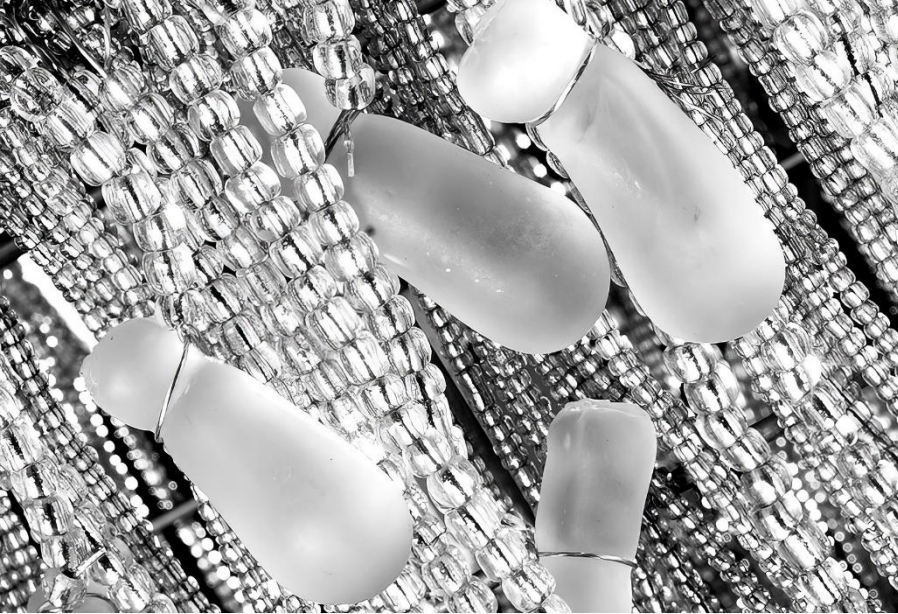


Model : **AVERSE** (H.44cm)- **CASCADE** (Ø.30~100cm)
Suspensions from MUYE family.
Suspensions composed of long lines of pearls ending in a glass drop.



Model : **CHRYSA** (H.65~95cm)
Suspension from **MARQUISE** family.
*Suspension composed of long lines of faceted
glass balls and hanging glass beads*





Model : **FONTAINE** (Ø.70~100cm) - **PARAPLUIE** (L.90~160cm)
Suspensions from MUYE family.
Suspensions composed of long lines of pearls ending in a glass drop.





Model : RONDIN (Ø.16~29cm)
Suspension from COROLLE family.
Suspension composed of cylindric metal structure
fully covered by glass corollas.



S.

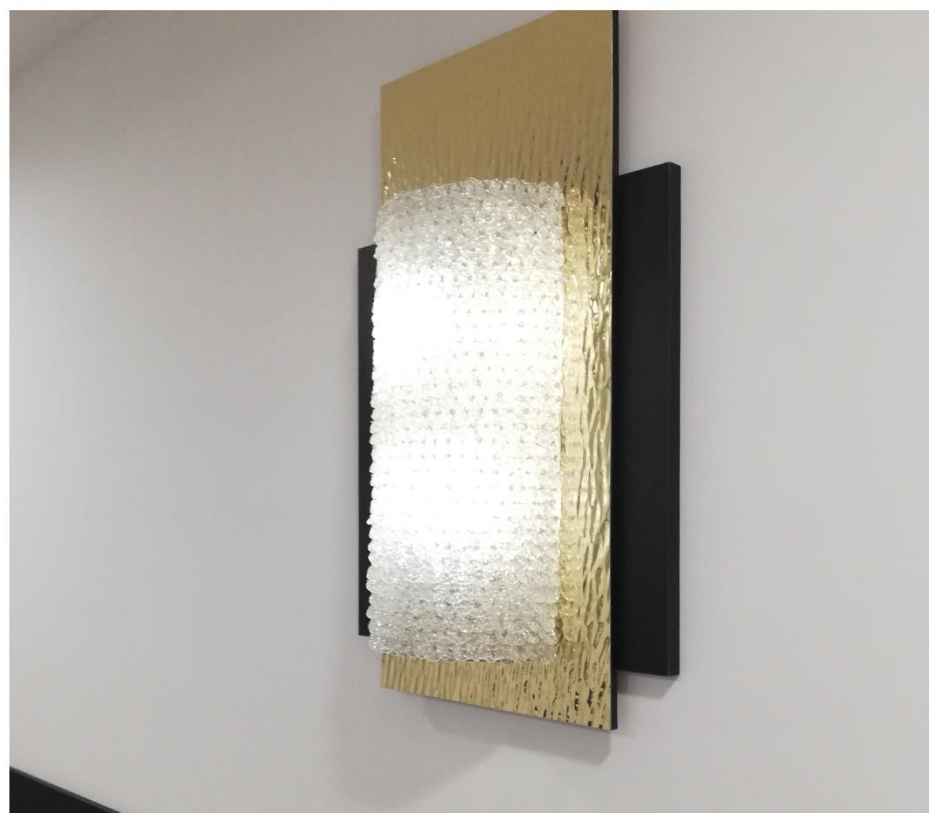
Model : **GLYCINE** (H.18~30cm)
Suspension from **PETALE** family.
Suspension composed of cluster of glass crystals.



Model : **PALMOND** (L.70~160cm) **ROUNDMOND** (Ø.70~100cm)
 Suspensions from **FACETTE** family.
 Suspensions composed of glass crystals fixed in row an oval or round metal structure, fully covered by glass beads.



Model : **ECORCE** (H.51cm)
Wall light from COROLLE family.
Wall light composed of metal structure
fully covered by glass corollas.





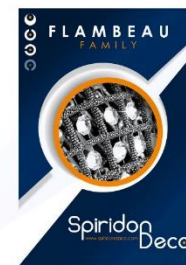
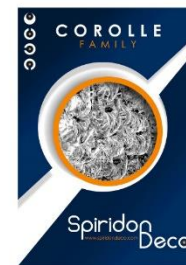
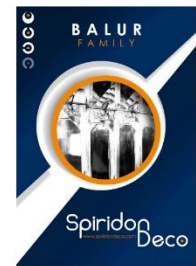
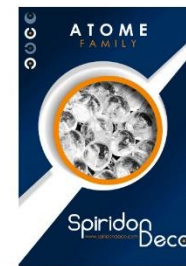
- INSPIRED BY



DOWNTON ABBEY

The majority of the models that you could appreciate in this ART OF SPIRIDON catalog are part of our different collections. They are grouped by FAMILY through a series of focus catalogs available on request or direct download from our website: www.spiridondeco.com/en/catalogs/

Find all our collections in glass beads, crystals, flower petals and many others in our focus catalogs dedicated to each SPIRIDON family. True decoration bibles, you will find all the information, variations, technical sheets and assembly plans of our models there in order to support you in a concrete and precise way in each of your projects.



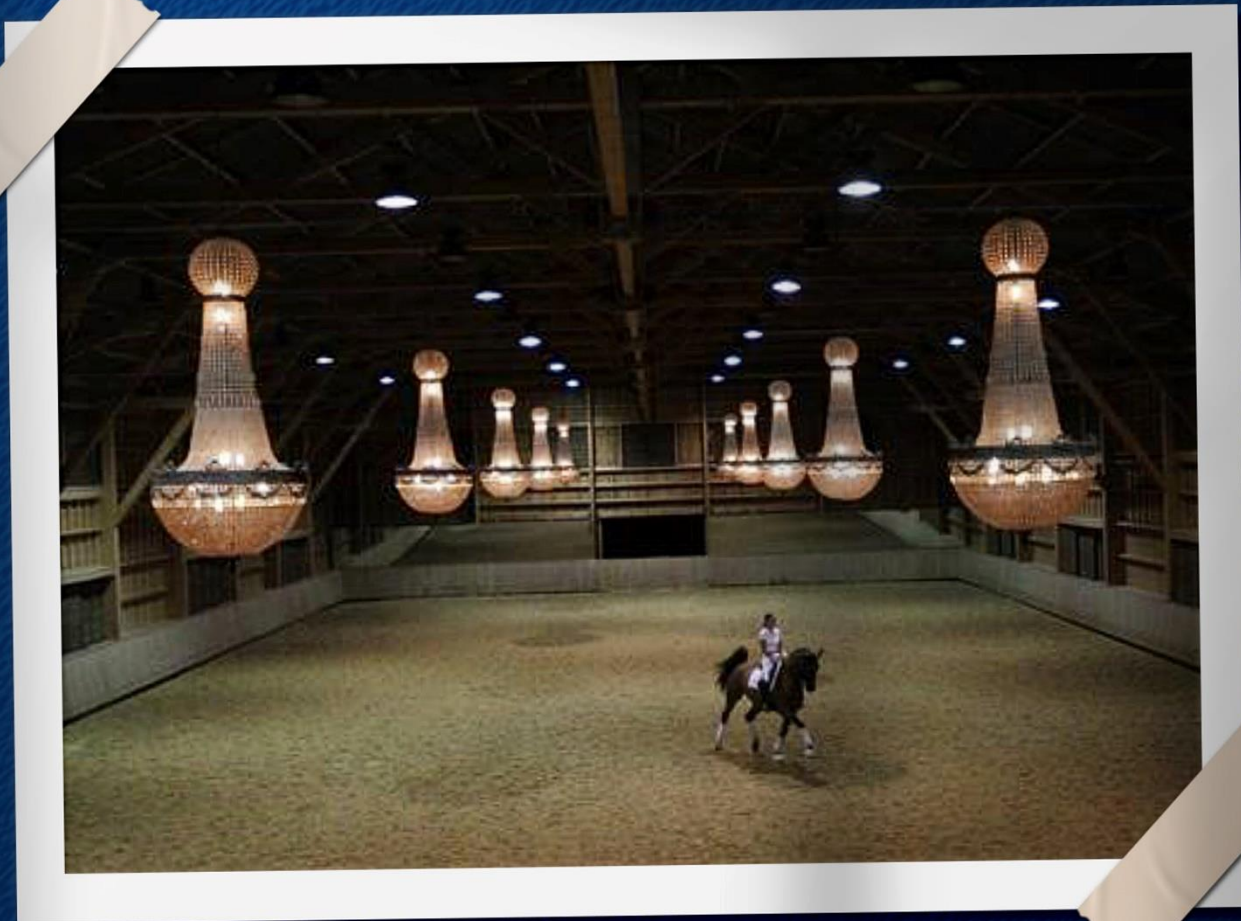
In our ART OF SPIRIDON catalog you have also seen models that come out of our collections. Each year, the SPIRIDON-DECO designer studio and our workshops develop original and unpublished models, which meet the particular requirements of our customers.

In order to satisfy our customers around the world, we offer a custom design service. You choose the size, diameter, materials, finish or a whole series of parameters that will allow your luminaire to match perfectly to your interior.

Contact us to talk together about your project: : info@spiridondeco.com



handcrafted
full customizable models



THANK YOU !

Thank you for viewing our Art of Spiridon catalog in which you were able to discover our family business and part of our lighting collection. And thank you also to all our customers who inspire us every day for more than 20 years through their fabulous projects!

The Spiridon family.



SPIRIDON DECO

19 Rue de l'Ancienne Potence

BE-7503 FROYENNES

+32(0)69 55 65 53

Info@spiridondeco.com

www.spiridondeco.com